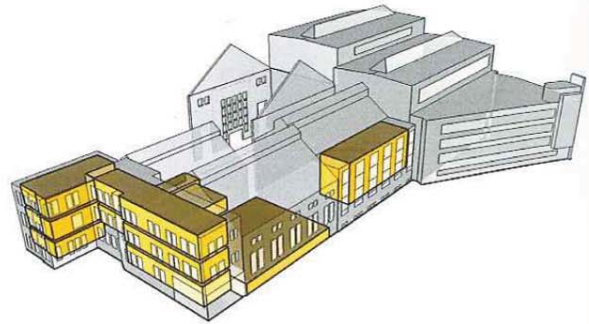
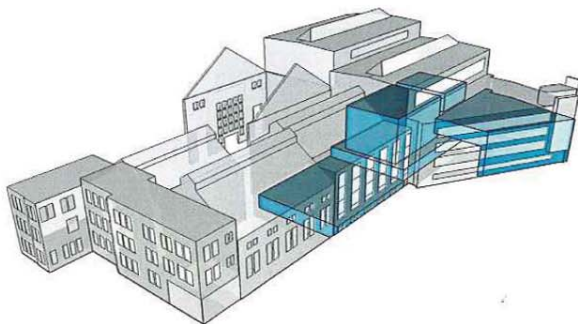


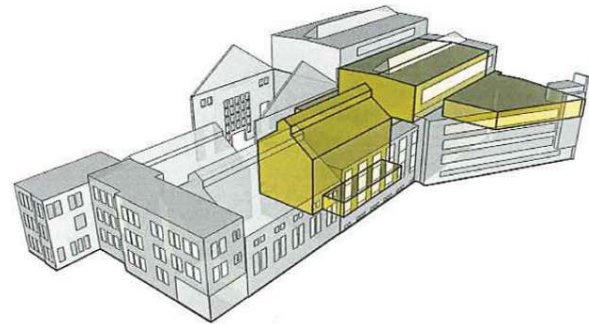
manifestaties en uitvoeringen
theater- en muziekzaal, evenementenhal, popzaal, dak pop-
zaal en multifunctionele ruimte



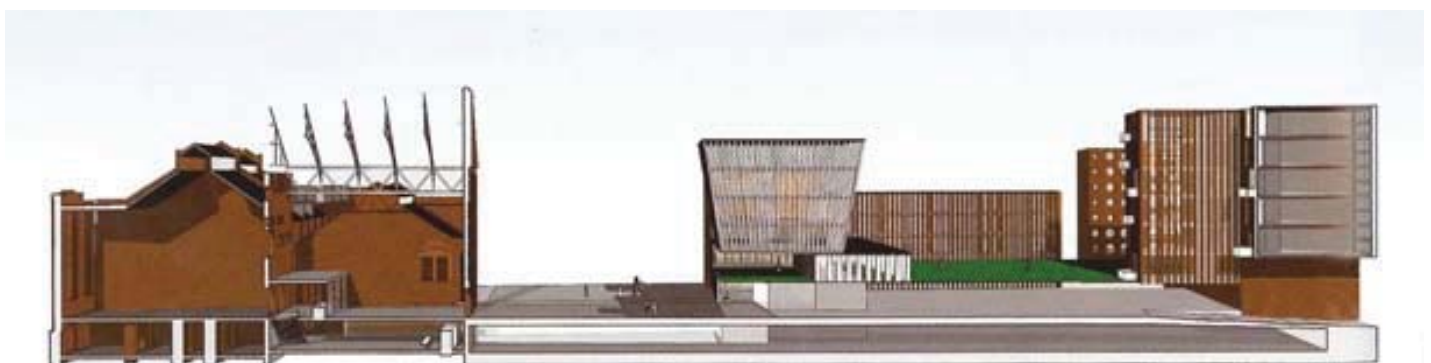
kantoren en lessen



jongerencluster



restaurant
verhuur / reserve
ook geschikt voor lessen



Refurbishment Energiehuis

Brief

The Energiehuis (Energy house) in Dordrecht exists of three former power stations and therein several machine halls and boiler rooms. The complex, building of which started 1908, lost its function after 1957. In the Cultural Scenario Stadswerven (May 2003), we studied the possible usability of the building for various cultural and educational institutions (ToBe, Popcentrale, Bibelot, possibly together with additional programming).

In this quick-scan, we studied the spatial possibilities and consequences for these functions and its position in the future neighbourhood Stadswerven further. One Architecture is now developing its broadly supported concept into an urban and architectural proposal for the 20.000 m2 project.

Timetable

September 2003 -

Client

Municipality of Dordrecht
 Projectleider Stadswerven, Arno de Lat
 Postbus 8
 NL-3300 AA Dordrecht

Role One Architecture

Programming
 Design (VO)

